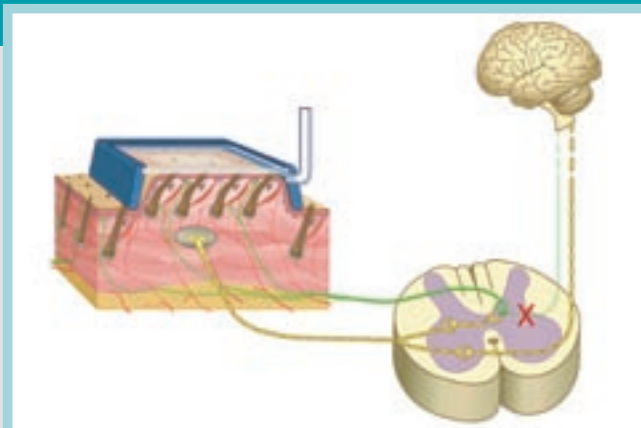


PSF™: a revolutionary technology for more efficient treatments with any laser or IPL

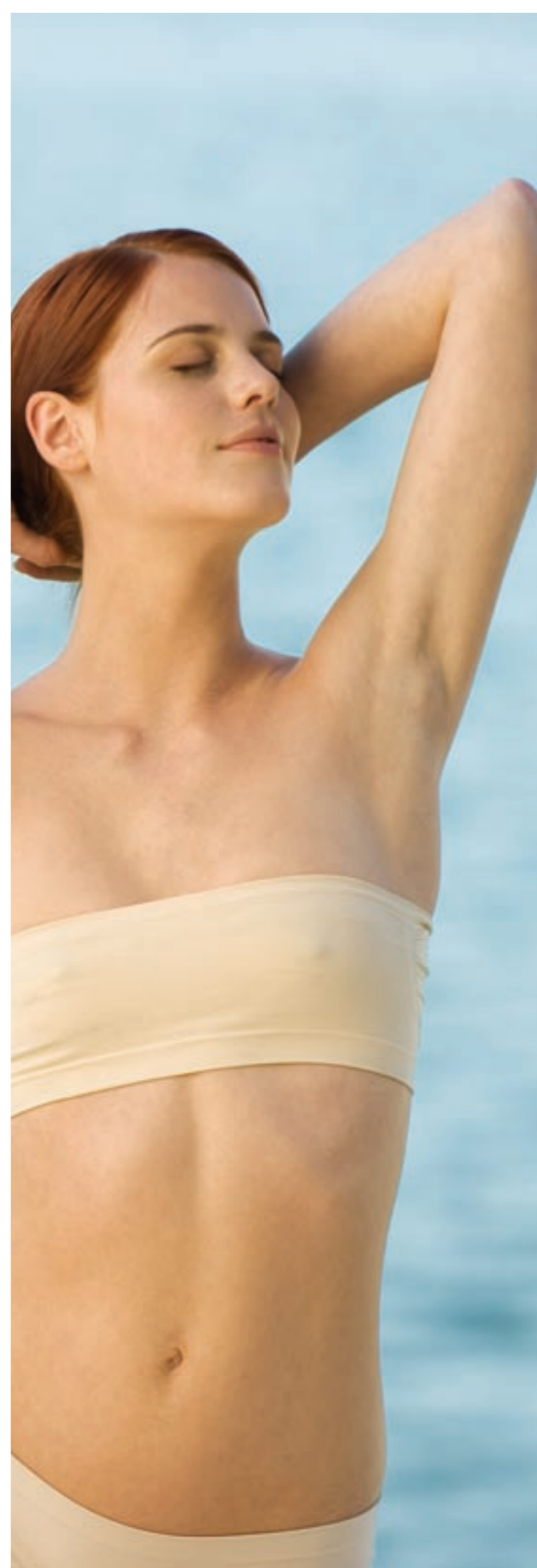
The Serenity is activated by the revolutionary Pneumatic Skin Flattening (PSF™) technology, which enhances efficacy of aesthetic treatments. PSF™ reduces pain even with the highest energy lasers and IPLs. The Serenity, which is adaptable to any laser or IPL system, increases skin protection and reduces post-treatment erythema without changing treatment protocols. The Serenity's thin evacuation chamber located beneath the handpiece of the laser or IPL, is placed on the skin. A proprietary vacuum system automatically evacuates air and any moistening liquid from the chamber, flattening the skin against the cover window. The skin is compressed, blocking pain signals to the brain and pushing blood from the treatment site. The laser or IPL beam is thus transmitted through a more transparent skin and is not absorbed by blood vessels, increasing its effectiveness. Analgesic creams are not necessary, making treatments faster and more cost effective. Patients treated for hair removal with PSF™ refused to continue treatments without it.



PSF operation principle: suction, elevation, upward compression and flattening of a large area of the skin. Pneumatic Skin Flattening blocks pain transmission through the dorsal horn, the "gate theory".



Pneumatic Skin Flattening renders the skin more transparent.



Benefits of Serenity for patients:

- More efficient
- Analgesic creams are not necessary even at high energy densities
- Better skin protection
- No post-treatment erythema
- Speedier treatments

Advantages for the practice:

- Improved coupling of light into the skin
- Automatic activation of vacuum
- Markers for precise positioning of handpiece
- Adaptors for quick, single handed treatments
- Adaptable to any laser and IPL
- Does not require change of treatment protocols

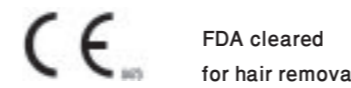
Specifications:

Standard window sizes:	29X57 mm and 29X29 mm
Transmitted wavelengths:	400 - 1800 nm
Operation modes:	automatic; hand activated
Cable length:	2.2 meters
Control unit size:	43W X 32L X 22H cm
Weight:	handpiece: 110 gram control unit: 9 Kg
Electrical:	110/220 V ; 60/50 Hz , 1 Amp
Optional:	Serenity cart

Handpieces (HP) and Adaptors to lasers and IPLs

HP/ Adaptor	Single hand operation	Two hands operation	Adaptable to IPLs/lasers
General purpose standard handpiece		●	Most popular IPLs and lasers
IPL connecting handpieces	●		Most popular IPLs
Laser connecting handpieces	●		Most popular lasers
Q switch connecting handpiece		●	Most popular Q switch lasers

Candela Corporation
 530 Boston Post Road
 Wayland, MA 01778 USA
 Phone: (508) 358-7637
 Fax: (508) 358-5569
 Toll Free: (800) 821-2013
www.candelalaser.com
www.inolase.com
sales@inolase.com



Patent pending in the USA, Japan, Europe and Israel.
 © Copyright 2006, Inolase Ltd.
 All rights reserved.



Candela is a registered trademark of Candela Corporation.
 © 2007 Candela Corporation. All rights reserved.
 0920-11-0071 Revision 01.



Pneumatic Skin Flattening | PSF™ |

For more efficient and safer treatments
 Adaptable to any IPL or laser



Optimized ergonomic with any laser or IPL

The Serenity system is comprised of a small ergonomically designed treatment handpiece and a remote control unit. The control unit is responsible for the automatic activation of the vacuum pump while the handpiece is positioned on the skin. The duration of the vacuum in the evacuation chamber is set by the user. Vacuum is automatically released for easy repositioning of the handpiece on the next treatment site. The Serenity can be operated with or without skin moistening substances. A highly flexible 2.2 meter long cable connects the handpiece to the control unit and enables the operator to treat patients in any position or at any location in the room. Special adaptors ensure the automatic centering of the treatment head on the treatment window. Markers enable the fast, easy repositioning of the handpiece on the next treatment site eliminating "skip" areas or overlaps, thereby further enhancing safety and efficacy.

Convenient single-hand adaptors specifically designed to match your IPL or laser model

Treatments with the Serenity can be conveniently performed with a single hand. This is particularly advantageous for quick uninterrupted treatments of large areas such as entire backs and legs. Adaptors, which quickly strap the PSF evacuation chamber to most IPLs and lasers, have been designed with specific emphasis on optimized matching to each IPL model. Vacuum activation is immediate and occurs automatically upon contact with the skin. The operator is not required to change working habits or to slow down the treatment. Vacuum adaptors are easily assembled and removed from the handpiece.

Optimized design

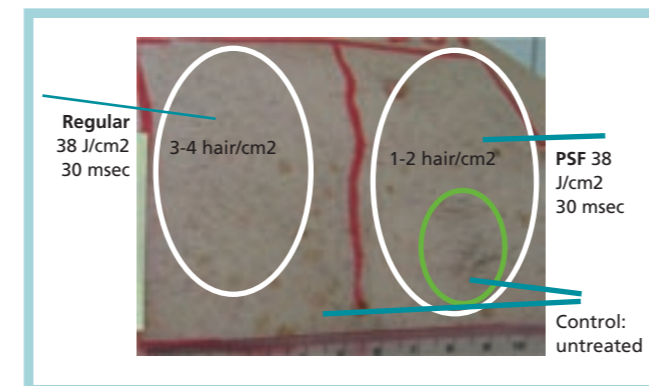
The sizes of Serenity handpieces are optimized to attain best results for each treatment site. Larger sized PSF chambers have been designed to treat large areas such as legs, backs and abdomens. Smaller PSF chambers have been designed to treat hands and facial areas.



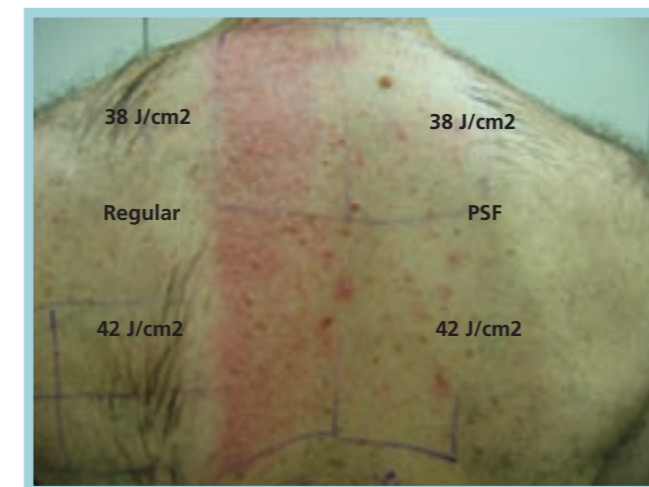
Single-hand adaptors provide fast and convenient treatment capability for large areas. Adaptors are specifically designed to optimize results for each IPL or laser model.

Serenity enhances your IPL/laser efficacy at higher energy settings with reduced risk

Blood expulsion, which results in better penetration of light into the skin, as well as better spectral selectivity, enables the full exploitation of the power of your IPL or laser. Treatment efficacy is enhanced, resulting in faster noticeable results with remarkable pain reduction (by pneumatic flattening of the skin) and diminished side effects. The advantage of higher skin transparency is particularly beneficial in darker skin types. Long term follow up of hair removal treatments with both IPLs and lasers has demonstrated the PSF's better efficacy, with reduced pain and reduced erythema.



Hair removal efficacy with a diode laser (LightSheer, Lumenis, 810 nm). Hair count on left (non-PSF) and right (PSF) sides of the back five weeks after first treatment. PSF side is clearly more efficient.



Post-treatment erythema (20 minutes post) with a LightSheer at energy densities of 26-42 j/cm2, pulse duration 30 millisecc. The non-PSF side (left) is red and was reported to be painful by the patient. The PSF side (right) shows no erythema and was reported to be without pain during treatment.

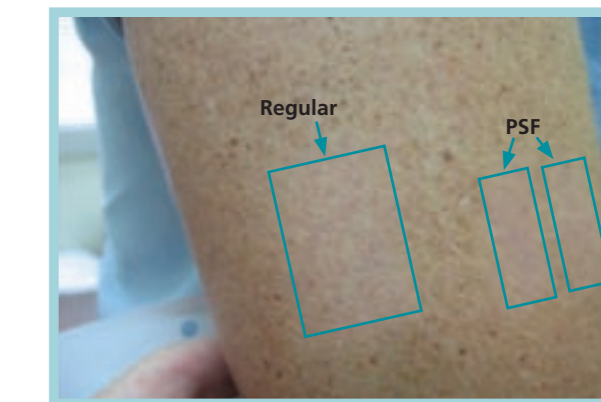
Enhanced spectral discrimination

The capability to increase IPL treatment energies for the treatment of pigmentation without erythema is particularly beneficial for patients. This capability is the result of the lack of absorption by competing chromophores in the blood, which are expelled from the beam path.



Before treatment: lentigenes/solar changes. Treatment with an IPL, 540 nm filter, 15 J/cm2, 15 millisecc pulse duration.

Pneumatic skin flattening results in pain reduction. Visible results come after fewer treatments, keeping your patients satisfied and confident.

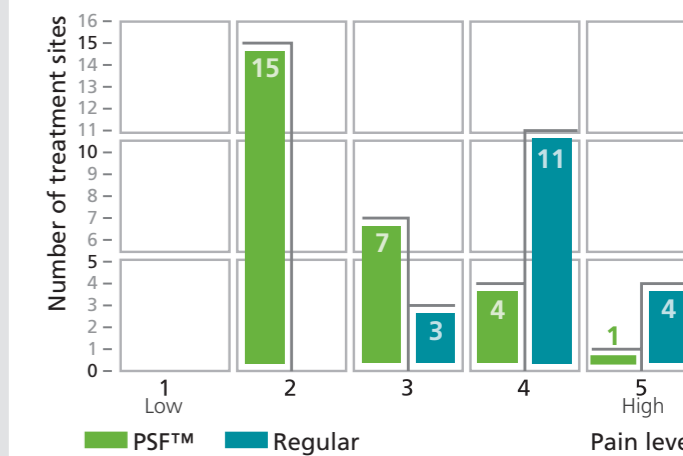


After: one month follow up after a single treatment. Treatment on PSF side was free of erythema, whereas, the non-PSF side was painful and patient suffered from erythema.

Clinically proven: peer reviewed controlled studies

A controlled hair removal study, which compares PSF to non-PSF treatments has been conducted with two lasers, an Alexandrite, Diode and an IPL. Results show:

- Higher efficacy in many cases was due to a more transparent skin and the elevation of hair follicles closer to the skin's surface.
- Remarkable reduction of pain by pneumatic flattening of the skin even at high energy densities.
- Considerably less post-treatment erythema. Treatment energy could be increased by 30% without erythema.
- Pneumatic flattening of the skin enhances discrimination between unwanted skin pigments and competing blood chromophores.



Pain level distribution: PSF™ vs. regular treatment

* Gary Lask, David Friedman, Monica Elman, Nathalie Fournier et al: "Pneumatic Skin Flattening (PSF): A novel technology for marked pain reduction in hair removal with high energy density lasers and IPLs, Journal of Cosmetic and Laser Therapy (2006); 8: 76-81

Serenity
Powered by PSF

