



BEFORE AND AFTER TREATMENT RESULTS

Skin Rejuvenation – Diffuse Redness/Pigmentation



pretreatment



after two treatments



pretreatment



after two treatments



pretreatment



after two treatments

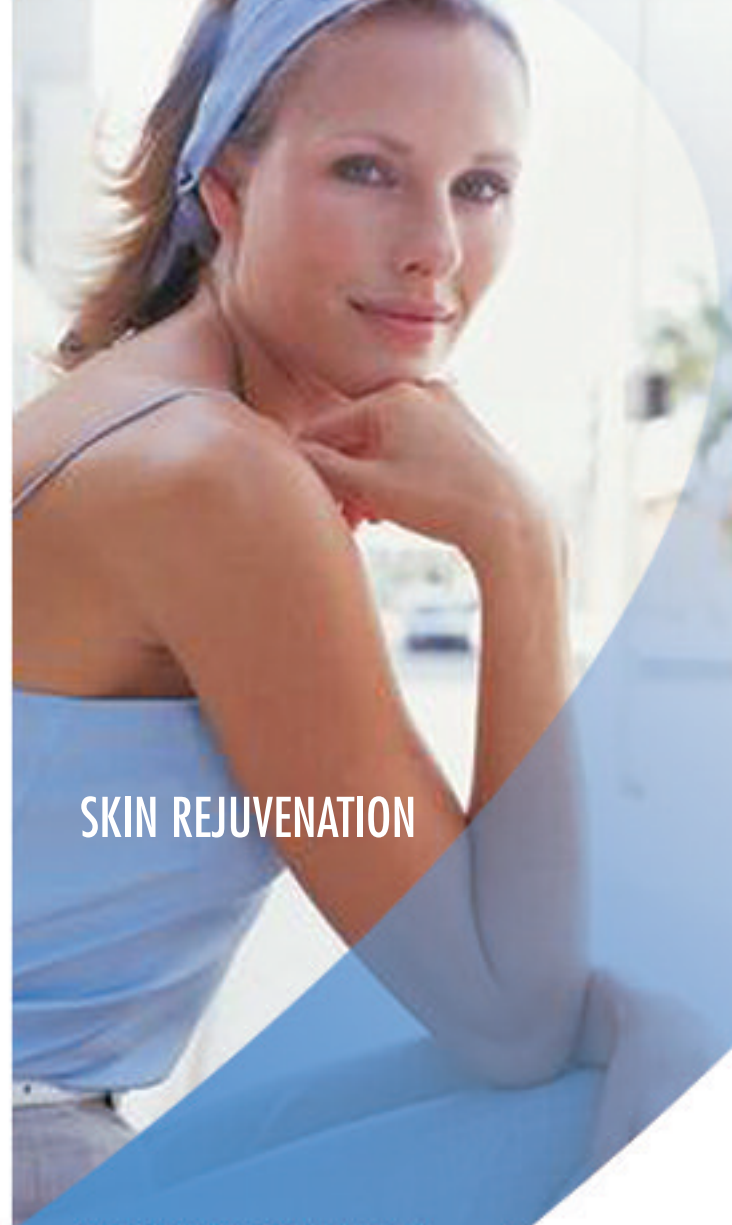
For more information on these therapies, please visit www.candelalaser.com.

This pamphlet is intended to provide general information only. For details pertaining to your specific situation, consult your physician or aesthetic practitioner.

Candela Corporation
530 Boston Post Road
Wayland, MA 01778 USA
Phone: (508) 358-7637
Fax: (508) 358-5569
Toll Free: (800) 821-2013



Ellipse I²PL is a trademark of Candela Corporation.
©2005 Candela Corporation Printed in the USA. 06/05 0920-16-0087 Rev. 01



SKIN REJUVENATION

PATIENT INFORMATION



SKIN REJUVENATION

ELLIPSE I²PL

WHAT IS SKIN REJUVENATION?

Skin Rejuvenation treatment with the Ellipse I²PL helps you keep a younger and fresher look. The safe, visible light emitted from the Ellipse I²PL flash-lamp makes your face look younger by removing age spots and diffuse redness, and by improving your skin texture. Uneven pigmentation is also reduced.

WHAT IS INTENSE PULSED LIGHT?

In its simplest form, this is a way of saying short flashes of very bright light. Ellipse I²PL uses short, safe bursts of light emitted from a flash-lamp to treat specific skin conditions. The technology is rather sophisticated, but the Ellipse I²PL system very carefully controls the overall delivery of the light—both the amount of light and the speed of its delivery to your specific skin condition are exact and precisely controlled by Ellipse I²PL's built-in computer.

THE DIFFERENCE BETWEEN LASER AND INTENSE PULSED LIGHT

Treatments with laser and with intense pulsed light both work in the same way, choosing

wavelengths that are absorbed by the target. But while a laser uses light with one specific wavelength, intense pulsed light uses a band of wavelengths.

CAN I BE TREATED?

As skin rejuvenation is based on light absorption by melanin and hemoglobin, treatments are most effective in patients with light skin who are not sun-tanned at the time of the treatment. The lighter the skin, the more pronounced the contrast between the age spots/blood vessels and the skin, making treatment easier. However, Ellipse I²PL has pre-programmed settings for different skin colors that deliver the correct energy output for your complexion.

DOES IT HURT?

Tolerance of pain varies greatly from person to person. No anesthetics are required, and many patients describe the feeling as a warming sensation similar to the feeling one has after a day on the beach.

DO I NEED TO TAKE SPECIAL PRECAUTIONS BEFORE AND AFTER TREATMENT?

The light used is a completely safe, visible light. Potentially harmful wavelengths are removed by the unique Ellipse I²PL Dual Mode Filtering system. Since tanning takes place by accumulation of pigment (melanin) in the skin, it is,

important to avoid tanning (sun, solarium or self-tanning cream) before and during the treatment period. Otherwise your tanned skin will absorb more light, which may lead to adverse effects. Generally, no post-treatment care is necessary. But people with sensitive skin may benefit from applying an ice pack to the face immediately after treatment. Furthermore, it is recommended to use a sunblock which blocks UVA and UVB (minimum SPF 30) for a few weeks following treatment.

WHAT CAN I EXPECT AFTER TREATMENT?

You may notice that the skin looks a little "discolored" for a few days following treatment. After that you will find that your skin looks smoother and fresher. You might choose to have 1 – 2 annual maintenance treatments in order to keep your youthful appearance.

HOW CAN I BE SURE ELLIPSE I²PL IS SAFE AND EFFECTIVE?

Clinical studies documenting Ellipse I²PL's safety and effectiveness have been completed and the results of these studies are published in respected medical journals. Please visit candelalaser.com to view these scientific papers. The settings used for your treatment will be based on the settings recommended by the clinicians who carried out the clinical trials.